

New Orleans: From Geology to Jazz

Dale Easley
University of Dubuque



New Orleans

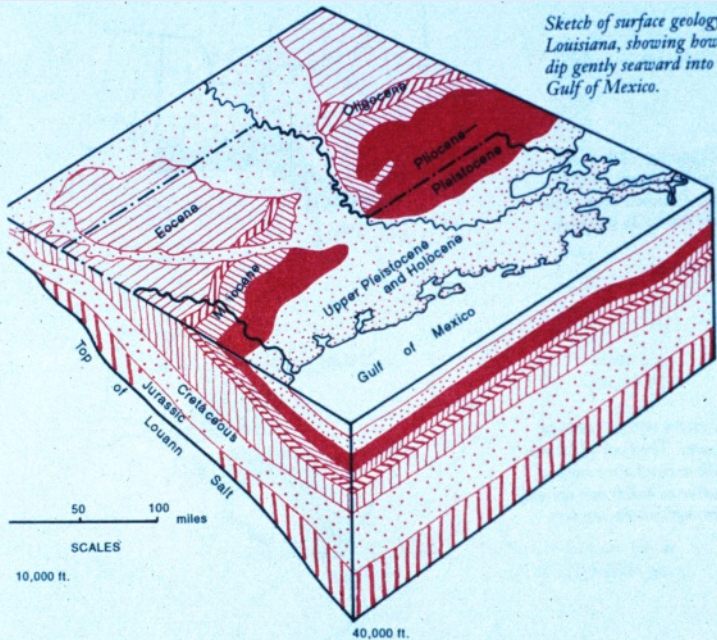


The opening of the Gulf of Mexico

Ragged edges of continents are caused by small rifts that split off from the main rift. Arrow points to rift that set structural stage for the lower Mississippi Valley. —Burke, 1980



The building of the delta



Great agricultural land



Large plantations with slave labor



The birth of the blues



Robert Johnson

Free people of color



Agostino Brunias - Free Women of Color with their Children and Servants in a Landscape

New Orleans' French heritage



The end of the Civil War, 1865





PLESSY V. FERGUSON
PRESS STREET RAILROAD YARDS
Site of the Arrest of Homer Adolph Plessy

— • • • —

On June 7, 1892, Homer Adolph Plessy was removed from the East Louisiana Railroad train and arrested by Detective C.C. Cain at the corner of Royal and Press St. He was charged with violating the 1890 Louisiana Separate Car Act that separated railroad passengers by race.

Plessy's act of civil disobedience was a test case organized by the Comité des Citoyens (Citizens' Committee) whose aim was to overturn segregation laws that were being enacted across the South. The philosophy and strategies of the Comité des Citoyens foreshadowed Civil Rights movements of the 20th century. Although the Supreme Court ruled against Plessy on May 18, 1896, his case marked the first post-Reconstruction use of the 14th Amendment's "equal protection" provision in a legal challenge to segregation. In their final statement after the Supreme Court verdict, the Comité des Citoyens proclaimed,

"We as freemen still believe we were right and our cause is sacred...In defending the cause of liberty, we met with defeat but not with ignominy". Their position was vindicated when the Supreme Court upheld similar 14th Amendment arguments in the 1954 case of Brown v. Board of Education.

(Continued on other side)

CRESCENT CITY PEACE ALLIANCE

Storyville, 1897-1917



The Great Migration



Prohibition, 1920-1933



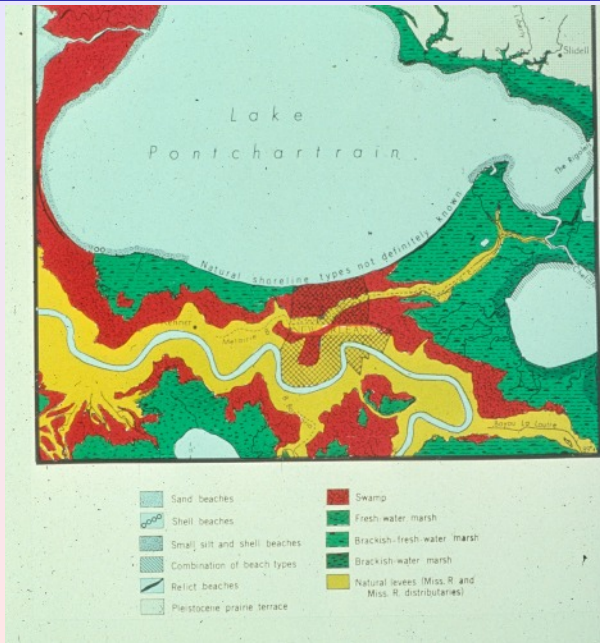
LIFE

1927 Mississippi River Flood



Washington & Shelby

New Orleans historic landscape



The geological heritage continues

