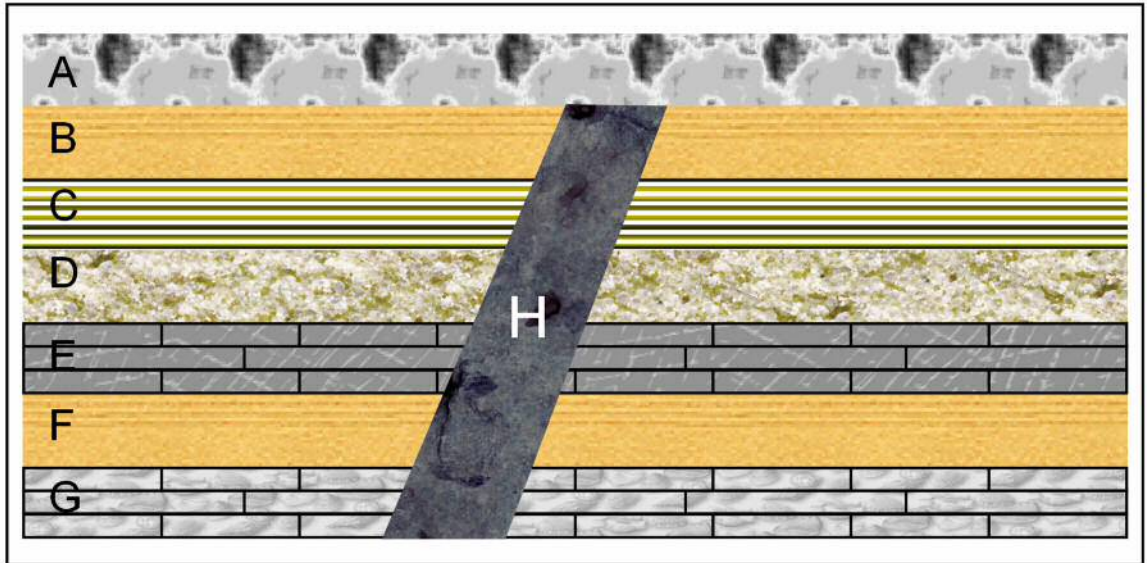


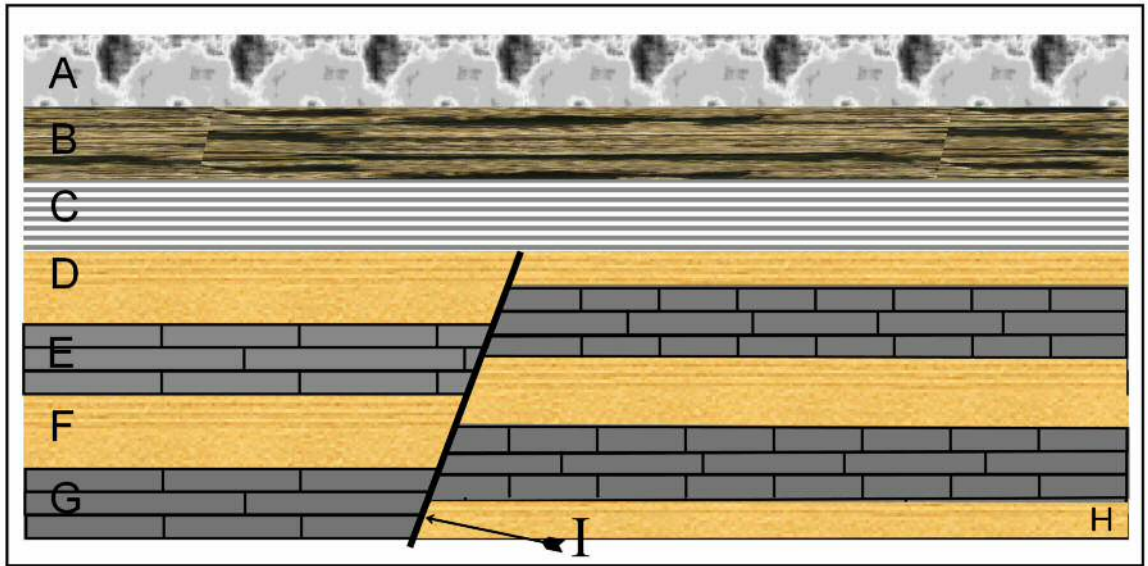
3 Geologic Time

For the following figures, determine the ordering for youngest to oldest for the layers identified with letters:

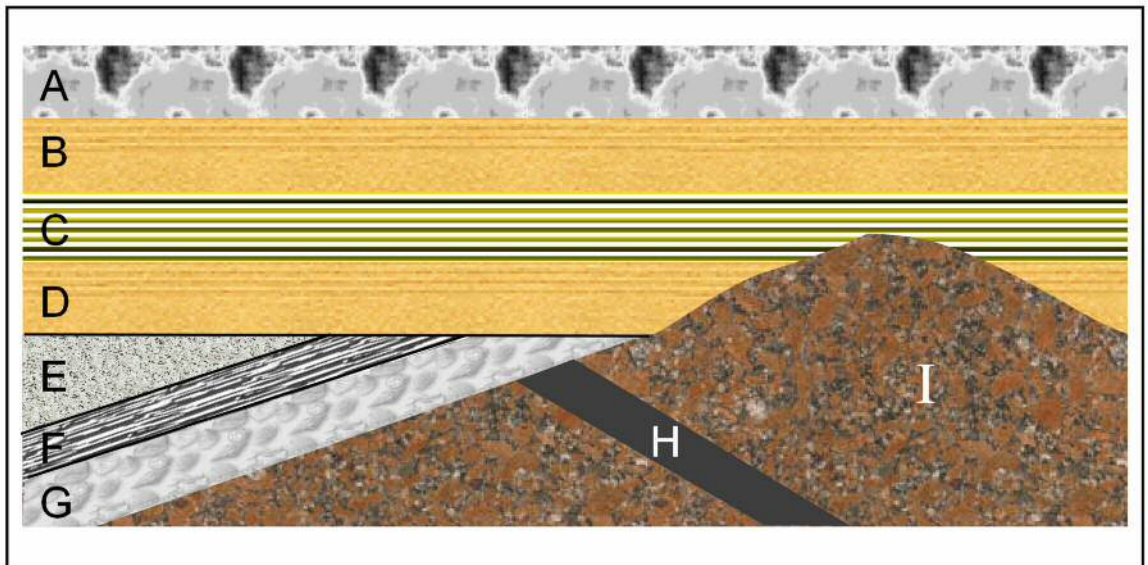
1. _____



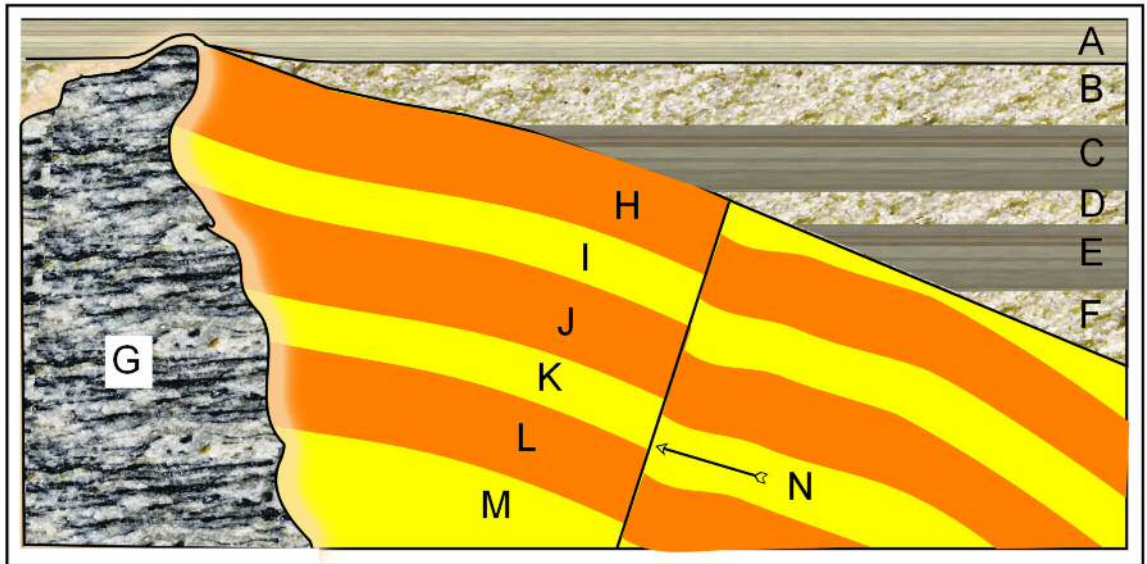
2. _____



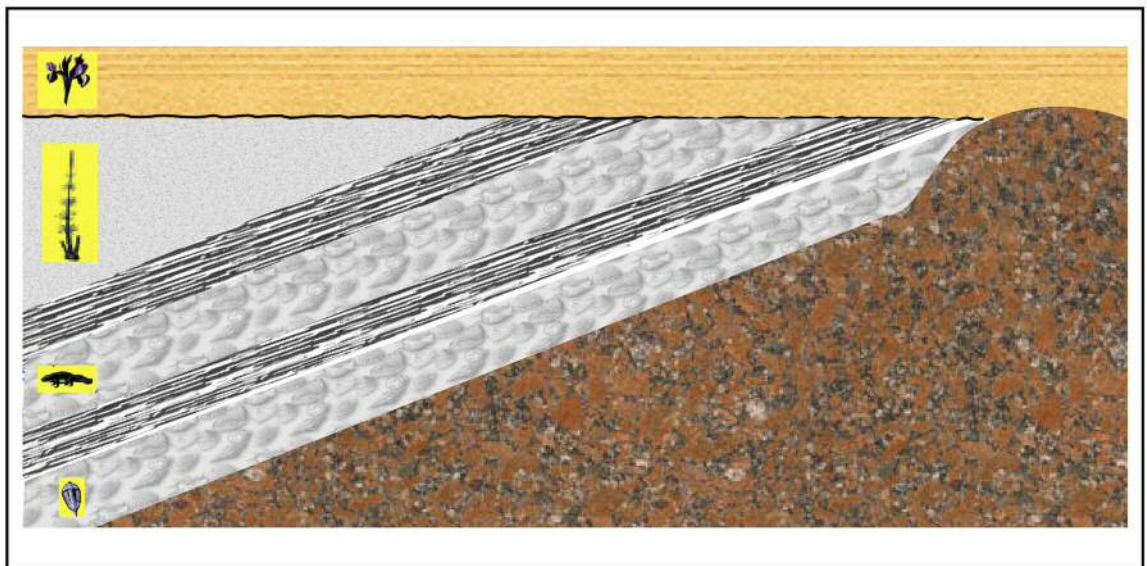
3. _____



4. _____



5. The following figure shows rocks similar to the distribution of rocks underlying Iowa. It includes fossils to represent the age of the rocks. I'll project a figure to help you with this. What happened during the Mesozoic time period at the location of this figure?



6. Examine the geologic map of the area south of Dubuque, shown below.

(a) What is the age of the rocks upon which UD sits. Use your book to

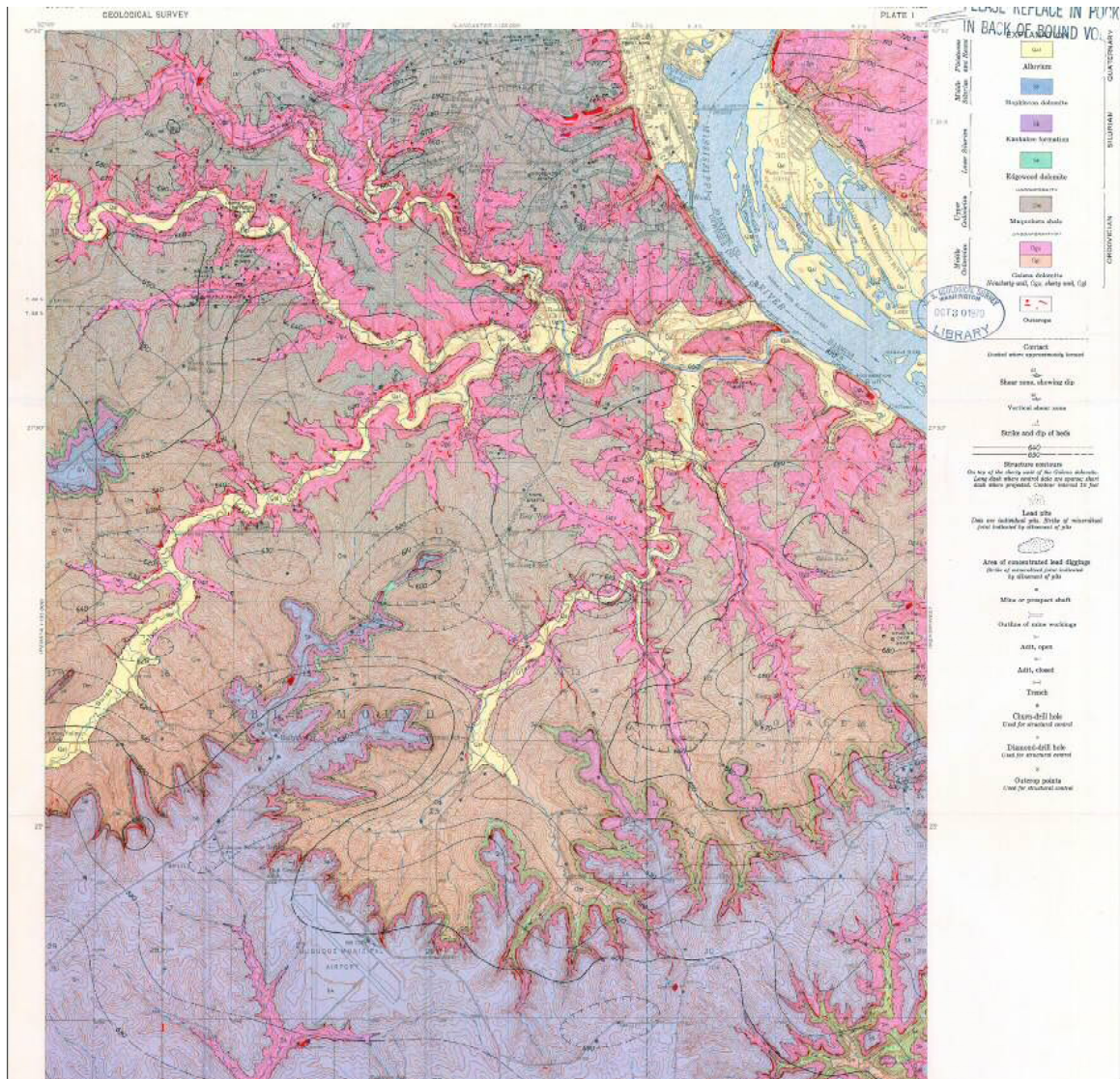
determine a fossil that is common to that time period. _____

(b) What is the geologic age of the blue formation covering much of the

south of the area? _____

(c) How can you recognize it when you drive south from Dubuque?

(d) What is the geologic age of the yellow formation on the map? What does it represent?



Out-of-Class Assignment

Familiarize yourself with the following terms, providing a brief definition and an example of their use::

- relative dating versus absolute dating
- parent isotope versus daughter isotope
- half-life
- unconformity

Define in your own words the following laws and principles:

- Law of Original Horizontality
- Law of Superposition
- Law of Inclusions
- Law of Cross-Cutting Relationships
- Principle of Fossil Succession